

# Piano Fonics

TEACH PIANO NOW

## FIRST IMPRESSIONS ToolBox



## OSTINATO SONGS

PENTASCALES & TRANSPOSITION FOR THE YOUNG PIANIST

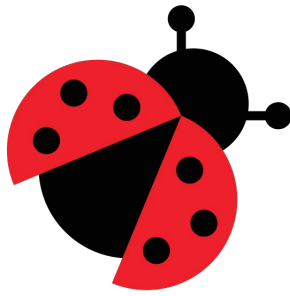
CAROLYN INABINET, NCTM

**MUSIC WORKS ACADEMY, LTD**  
302 West Bethany Home Road  
Phoenix, Arizona 85013

Copyright © 2015 Music Works Academy, Ltd.  
All Rights Reserved Printed in USA  
Pianofonics and the Pianofonics symbol are registered trademarks of Music Works Academy, Ltd.

WARNING: Any duplication of the material contained in this book,  
without the written consent of the owner, is an infringement of U. S. copyright law  
and subject to the penalties and liabilities provided therein

# Teaching Scope and Sequence

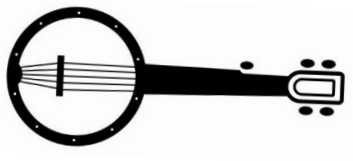


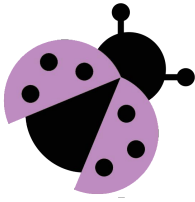
LADYBUG.....01

MOUSE, MOUSIE.....07

BANJO MAN.....13

CLAP YOUR HANDS.....19





# LadyBug

## Hands Separate

C - Position

LH 1 = Middle C      LH 5 = Bass C

1 5 1 5 Inabinet

La - dy bug, La - dy bug; fly a - way.

3

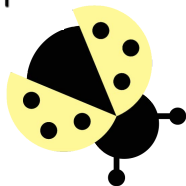
Where are you? Come home to stay!

5 1 5 1

La - dy bug, La - dy bug; fly a - way.

3

Where are you? Come home to stay!



# LadyBug Mirror

## RH Melody

C G 1 5 Inabinet

D A La - dy bug, La - dy bug;

D $\flat$  A $\flat$

1 5

1 5

fly a - way.

1 5

3 4 5

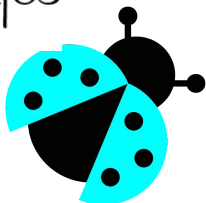
Where are you?

3 4 5

5 1

Come home to stay.

5 1 5



# LadyBug Mirror

## LH Melody

C G      5      1      Inabinet

D A      La - dy bug,      La - dy bug;

D $\flat$  A $\flat$       5      1

5      1

Fly      a -      way.

5      1

3      2      1

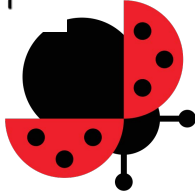
3      2      1

1      5      1

1      5

Come      home      to      stay.

1      5



## LadyBug LH Ostinato

C G  
D A  
D $\flat$  A $\flat$

1 5 Inabinet

La - dy bug, La - dy bug;

1 5

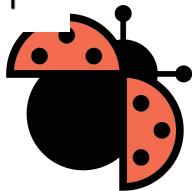
fly a - way.

3

Where are you?

5

Come home to stay.



# LadyBug

## RH Ostinato

C G D A D $\flat$  A $\flat$

5 1 5 1 Inabinet

La - dy bug, La - dy bug;

5 1

5 1 5 1

Fly a - way.

5 1

5 1 5 1

Where are you?

3 2 1

5 1 5 1

Come home to stay.

1 5







# Mouse, Mousie

## Hands Separate

C - Position

LH 1 = Middle C      LH 5 = Bass C

Traditional

5 5 5

Mouse, mouse - ie lit - tle mouse - ie; Hur - ry hur - ry do.

5 5

Or the kit - ty in the house - ie, Will be chas - ing you.

1 1

Mouse, mouse - ie lit - tle mouse - ie; Hur - ry hur - ry do.

Or the kit - ty in the house - ie, Will be chas - ing you.



# Mouse, Mousie Mirror

## RH Melody

Traditional

C	G	F	E	
D	A	F#	E $\flat$	
D $\flat$	A $\flat$	B	B $\flat$	

5	1	

5		

5		



# Mouse, Mousie Mirror

## LH Melody

C G F E      1      1      Traditional

D A F# E $\flat$

D $\flat$  A $\flat$  B B $\flat$

1

Hur - ry      hur - ry do.

Or the kit - ty      in the house - ie

Will be      chas - ing you.



# Mouse, Mousie

## LH Ostinato

C	G	F	E	}	5	Traditional	
D	A	F#	E♭		4/4	Mouse, mouse - ie	lit - tle mouse - ie
D♭	A♭	B	B♭		4/4		

1  
5

5		
4/4	Hur - ry	hur - ry do.
4/4		

5		
4/4	Or the kit - ty	in the house - ie
4/4		

5		
4/4	Will be	chas - ing you.
4/4		



# Mouse, Mousie

## RH Ostinato

Traditional

C	G	F	E	
D	A	F#	E♭	
D♭	A♭	B	B♭	

Mouse, mouse - ie      lit - tle mouse - ie

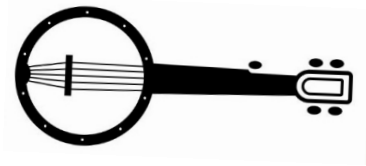
1      3      5      1

	Hur	-	ry		
	hur	-	ry		do.
	1				

	Or	the	kit	-	ty	
	in	the	house	-	ie	
	1					

	Will	be			
	chas	-		ing	you.
	1				



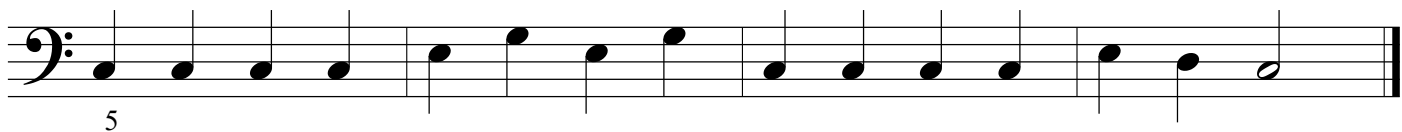
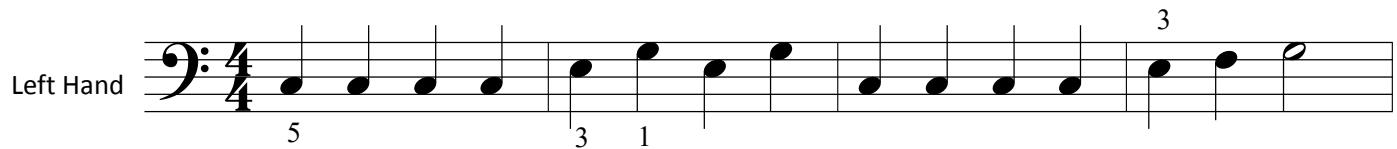
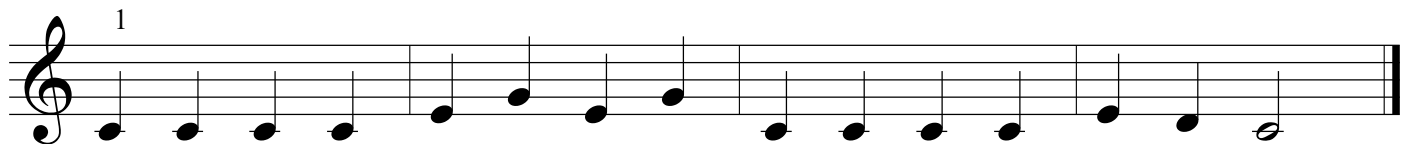
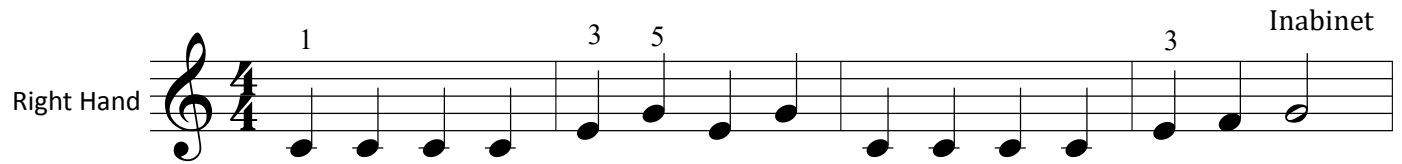


# Banjo Man

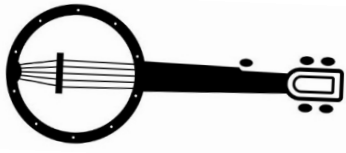
## Hands Separate

C - Position

LH 1 = Middle C      LH 5 = Bass C





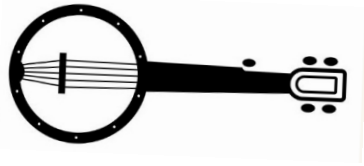


# Banjo Man Mirror

## RH Melody

Inabinet

C G F E  
D A F# E $\flat$   
D $\flat$  A $\flat$  B B $\flat$



# Banjo Man Mirror

## LH Melody

C G F E  
 D A F# E $\flat$   
 D $\flat$  A $\flat$  B B $\flat$

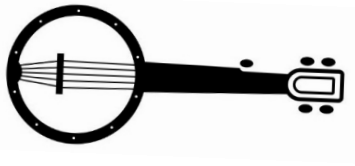
Inabinet

5 3 1

5 3

5

5



## Banjo Man

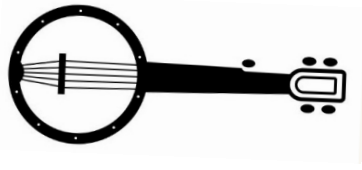
### LH Ostinato

C G F E      1      3      5      Inabinet

D A F# E $\flat$

D $\flat$  A $\flat$  B B $\flat$

1  
5



# Banjo Man

## RH Ostinato

5 1

C G F E

D A F# E♭

D♭ A♭ B B♭

5

5

5

5





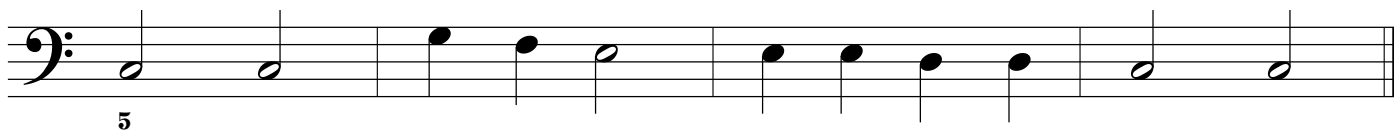
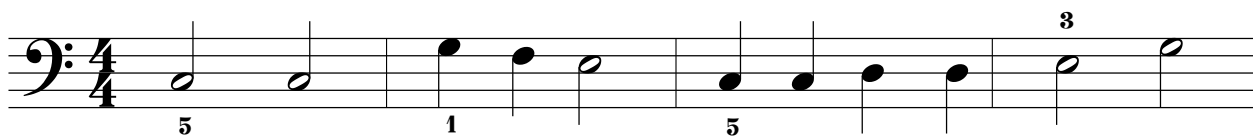
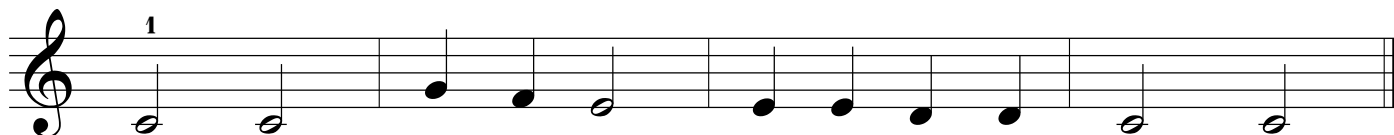
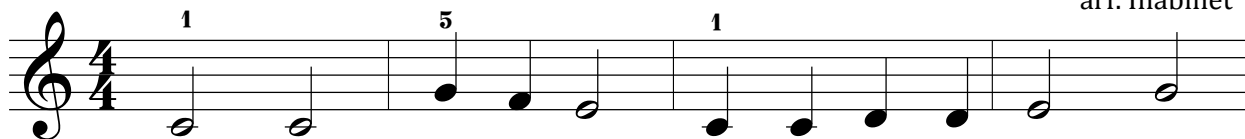
# Clap Your Hands

## Hands Separate

C - Position

LH 1 = Middle C      LH 5 = Bass C

arr. Inabinet





C G F E

D A F# E♭

D♭ A♭ B B♭

1 5

arr. Inabnet

A musical score for the song "The Rose Tree". The score is written for a piano, with a grand staff consisting of a treble clef and a bass clef. The key signature is one flat (B-flat), and the time signature is 4/4. The melody is played in the treble clef, and the accompaniment is played in the bass clef. The score consists of two measures. The first measure contains four quarter notes in the treble clef (G4, A4, B4, C5) and four quarter notes in the bass clef (F3, E3, D3, C3). The second measure contains two half notes in the treble clef (G4, A4) and two half notes in the bass clef (F3, E3). The score is labeled with a "1" above the first measure and a "1" below the first measure.

A musical score for the song "The Rose Tree". The score is written for a piano, with a grand staff consisting of a treble clef and a bass clef. The key signature is one flat (B-flat), and the time signature is 3/4. The music is divided into two systems. The first system contains two measures: the first measure has a half note G4 in the treble and a half note F4 in the bass; the second measure has a half note E4 in the treble and a half note D4 in the bass. The second system contains two measures: the first measure has a half note C5 in the treble and a half note B3 in the bass; the second measure has a half note A4 in the treble and a half note G3 in the bass. The score is marked with a "1" above the first measure of the first system and a "1" below the first measure of the second system.

A musical score for a piano piece. The score is written for two staves, Treble and Bass. The Treble staff has a treble clef and a key signature of one flat (B-flat). The Bass staff has a bass clef and a key signature of one flat (B-flat). The score is divided into two measures. The first measure contains a triplet of eighth notes in both hands, starting on G4 in the Treble and G3 in the Bass. The second measure contains a half note in the Treble (B-flat4) and a half note in the Bass (B-flat3). The text 'Quiet Hand' is written in the right margin of the second measure.



# Clap Your Hands Mirror

## LH Melody

arr. Inabinet

C G F E  
D A F# E♭  
D♭ A♭ B B♭

Quiet Hand





# Clap Your Hands

## LH Ostinato

arr. Inabinet

C G F E

D A F# E $\flat$

D $\flat$  A $\flat$  B B $\flat$

1 5

1

1

3



# Clap Your Hands

## RH Ostinato

arr. Inabinet

C	G	F	E	}	
D	A	F#	E♭		
D♭	A♭	B	B♭		